



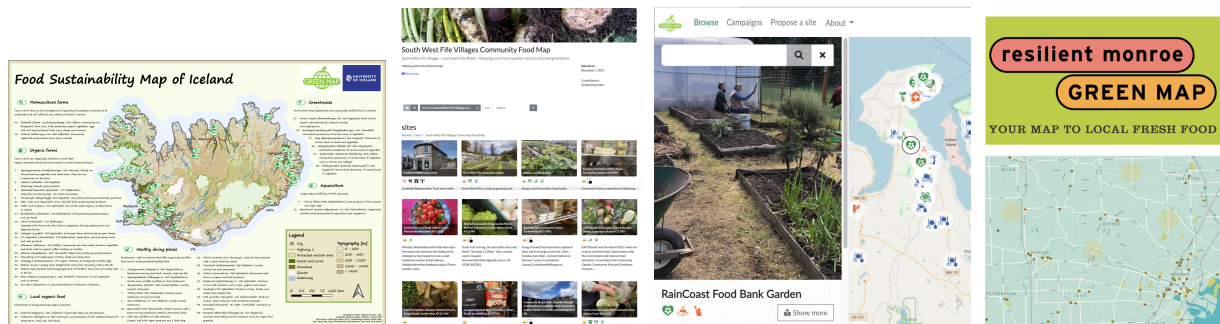
## Transform your community with a Green Map!

Now available on the new user-friendly  
Green Map Platform: a shared set of Local Food Icons

Local Food Icons by Green Map System											v 2 2023		
Created with and for Green Mapmakers who are charting local food resources and resilience <a href="https://GreenMap.org/localfood">GreenMap.org/localfood</a>											New to consider 10/23/23		
growing	Farm	City Farm / Community Farm	Allotment Garden	Community Garden	Permaculture	Greenhouse	Vermiculture	Aquaculture	Conventional Farm Runoff	Invasive Species	Great Soil	Native Plants / Forest	Agricultural Land Reserve
eating	Farmers/Local Market	Organic Food	Healthy Dining	Picnic Spot / Outdoor Dining	Artisanal Food / Local Flavor	Landmark Dining/Pub	Plant-based/ Vegan	Free Fridge / Food Rescue / Comm. Larder	Refill Here	Food Sovereignty Initiative	Food Coop	Food Hub	
enterprise	Farming / Cooking School	Farm Stand	Composting Site	CSA	Nursery/ Garden Shop	You Pick	Agritourism	Tasting Room	Low Carbon	Tool Library	Seed Library	Eco Art	
specialty	Community Kitchen	Food Bank	Food Gathering Site	Beekeeping	Edible Landscape	Hydroponic/ Aquaponics / Coastal Agriculture	Farm Animals	Slow Food Style	Regenerative Landscape	Botanical Garden / Pollinator & Honey Plants	Medicinal Plants	Fairgrounds / Farm Museum	Dead Zone

Comment on the draft set at [GreenMap.org/localfood](https://GreenMap.org/localfood) by 12/12/23

These open source icons are key to engaging communities in making maps that contribute to secure, healthy, informed communities. Each locally-led food mapping project brings people together to visualize assets and issues while promoting local farmers markets, food banks, community gardens and related enterprises and educational resources. **It's transformative!** Each mapped site will be recognized as part of a local movement for food security & wellbeing. Moreover, Green Mapmakers use their new skills as springboards to green jobs and careers.



Already utilized in 65 countries on printed and interactive maps, the full set of Green Map Icons include 170 types of ecological, justice and sustainability assets and challenges. Our mapping platform was designed to spur collaboration and empower those new to technology. Moving soon to [GreenMap.org](https://GreenMap.org), the first 100 Green Maps are already on this free to use Platform.

**Mapping is fundamental!** Yes, you too can create local icons to add to your map, and use our surveying tool to gather insights and ideas around your community.



Food mapping is the gateway for rural and frontline communities alike. Your matched support this [Giving Tuesday](#) will help our movement build skills, networks and knowledge to directly counter climate change and enable a wider variety of community-building and sustainability initiatives. Contact [info@greenmap.org](mailto:info@greenmap.org)